

MODEL 6000

- Sizes // 4" through 10"
- Available in aluminum, carbon steel, stainless steel, and other materials
- Available in free lift or lockdown cover
- Designed to assure uniform seating

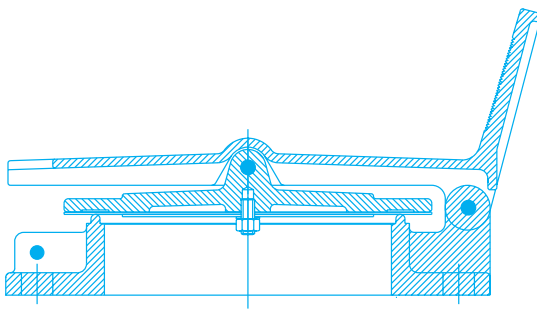


GAUGE HATCH

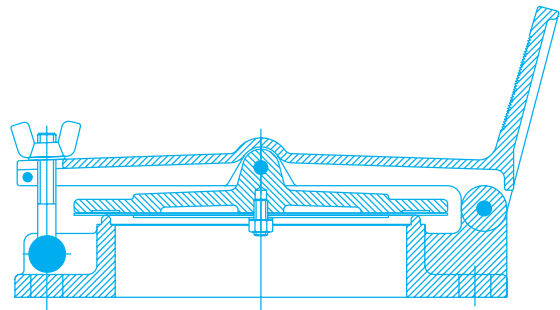
Model 6000 Series provide access for gauging or obtaining product samples from storage tanks. The Model 6000 also provides pressure relief as emergency venting. The Model 6100 incorporates a positive cover hold down which assures a premium tight seal on tanks with internal pressures up to 3 psig. Gasketed covers are recommended on tanks with high pressure settings. Model 6100 offers lockdown capability.

SPECIAL FEATURES

Model 6000 Series is designed with a serrated foot lever surface to avoid foot slippage when opening. This model permits the use of both hands during gauging or sampling. Gravity will close the cover upon removal of pressure on the foot treadle. Groth's special "cushioned-air" seating or metal-to-metal seatings available.

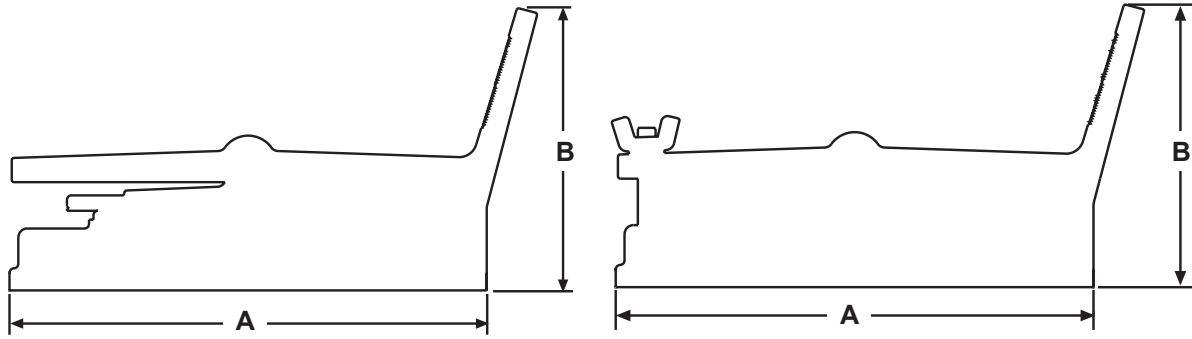


MODEL 6000



MODEL 6100

SPECIFICATIONS



Specifications subject to change without notice. Certified dimensions available upon request.

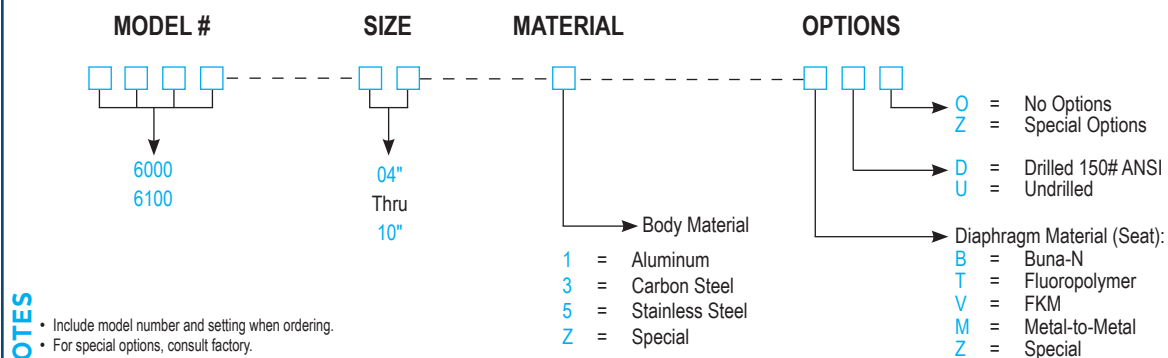
Size (Metric)	A Width (Metric)	B Height (Metric)	Approx. Ship Wt. Lbs. Aluminum
4" (100 mm)	10" (250 mm)	6" (152 mm)	7 (3 kg)
6" (150 mm)	12.50" (318 mm)	8" (203 mm)	10 (5 kg)
8" (200 mm)	15" (381 mm)	8" (203 mm)	13 (6 kg)
10" (250 mm)	17.75" (451 mm)	9" (229 mm)	17 (8 kg)

‡ When gauge hatch includes the lockdown feature, change model number to 6100.

† 150 # ANSI. drilling compatibility, F.F. on aluminum, carbon steel, and stainless steel alloys.

HOW TO ORDER

For easy ordering, select proper model numbers



NOTES

- Include model number and setting when ordering.
- For special options, consult factory.

EXAMPLE

6 0 0 0 — 0 4 — 1 — T D O

Indicates a 4" Model 6000 with Aluminum Body, Fluoropolymer Seat Diaphragm, Drilled Flange and no other options.