

Gas/Hydraulic Valve Operators

Safe and Efficient Gas Pipeline Control



BETTIS™


EMERSON™
Process Management

Design and Construction

Emerson Process Management – Valve Automation is recognized worldwide for the reliability of its actuators under the most demanding conditions. The gas/hydraulic products epitomize the quality and performance required for controlling high pressure natural gas pipelines in remote locations and under severe climatic conditions.

Bettis™ gas/hydraulic actuators are used to automate valves located on gas transmission pipelines, often travelling hundreds of miles through inhospitable areas where there are no low pressure instrument air or high pressure hydraulic supply lines available. Bettis actuators are available in either rotary, quarter-turn models or in linear models.

The gas/hydraulic actuators operate using pressurized gas from the pipeline as its power source, requiring reliability and safety features built into the valve operator system. Since the line gas is a potential hazard, Bettis actuators use a clean, non-explosive hydraulic fluid as an oil barrier rather than direct line gas.

Features and Benefits

- High Pressure - Uses a high pressure gas supply (typically from gas pipeline) as power source.
- Excellent sealing – All models have zero leak pistons and rod seals with materials selected to suit application .
- High torques and thrusts – Rotary quarter-turn models have torques to 6,000,000 lb. in (678,000 Nm) and linear models with thrusts up to 650,000 lbs (2,891,200 N).
- Adaptability – Adaptable for all types of gas compositions including sour (NACE) and wet gas.
- Aluminum alloy actuator body and controls - – For exceptional corrosion resistance and low temperature applications.
- Many control system options - including remote control, high/low shutoff and linebreak.
- Hydraulic hand pump for emergency operation.
- Piston with non-metallic wear ring to prevent piston/cylinder scuffing.
- Reliable tanks – Bettis actuators use pressure vessels manufactured and certified (U stamp) to ASME Section VIII as standard.
- Standard operating temperature is -50°F to 150°F (-46°C to + 66°C).
- Standard operating pressure to 1,440 PSIG.

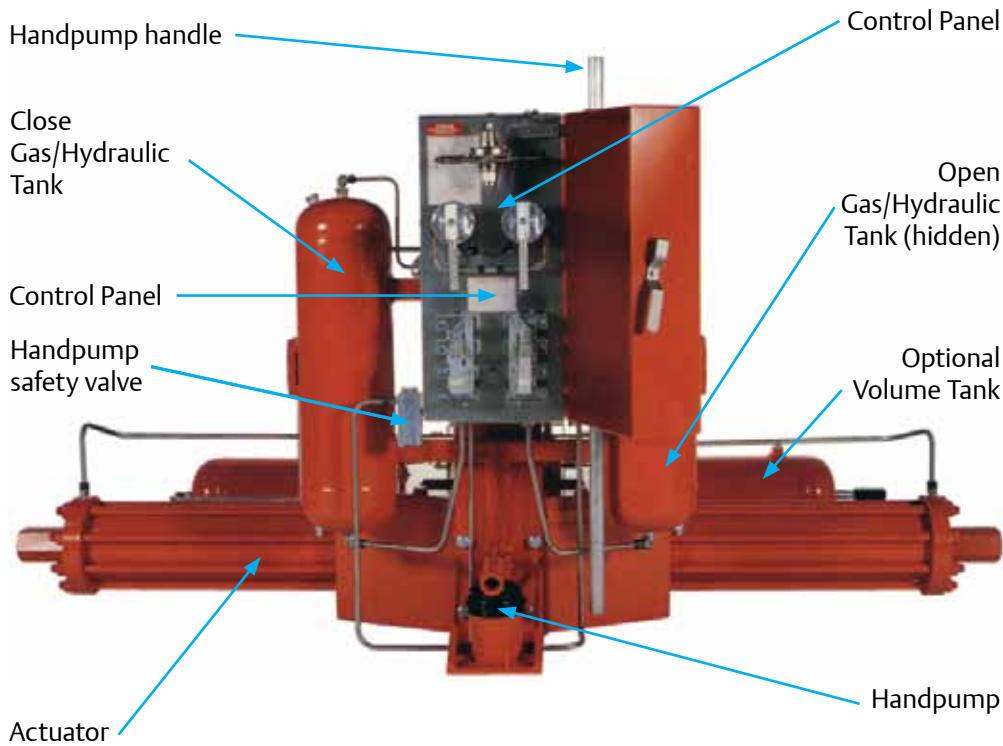
Bettis has been a global leader in valve control for high pressure natural gas operation for more than 55 years.

Bettis gas/hydraulic valve operators have proven themselves as a safe means of valve control in any climate or terrain, from remote desert to arctic conditions.

Torques of up to 6,000,000 lb in and thrusts to 650,000 lbs provide the reliability for operating at the highest pipeline pressure.



Assembly and Features



Quarter-Turn Operators

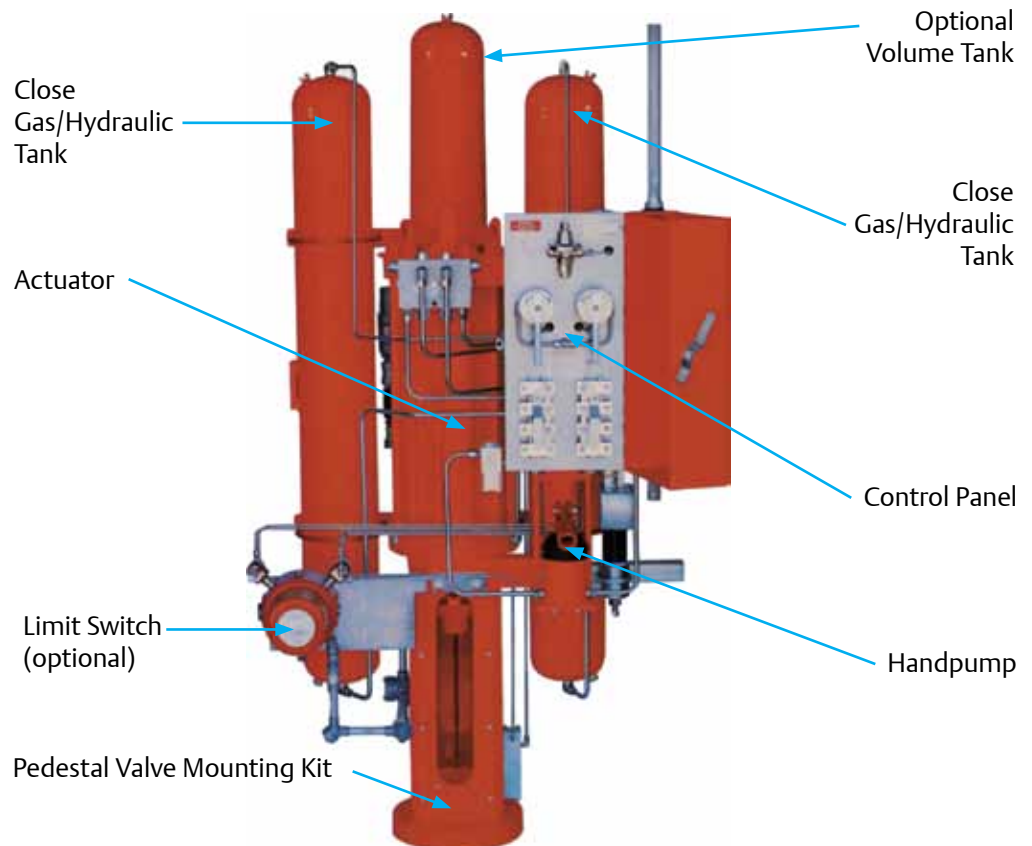
Incorporates a scotch-yoke design for converting linear motion to rotary motion, with breakaway torques from 5,000(565 Nm) to 6,000,000 lb. in (678,000 Nm).

- Readily adaptable for all quarter-turn valves, 90° +/- 10° adjustable rotation standard, limited rotation available.
- Standard light weight cast aluminum drive cases. Optional ductile iron or cast steel cases available.
- Replaceable top and bottom yoke bearings.
- Torque limiting devices available
- Integral drive rod deflection stabilizers to absorb side loads.
- Visual valve position indication
- Readily adaptable for fail safe operation.

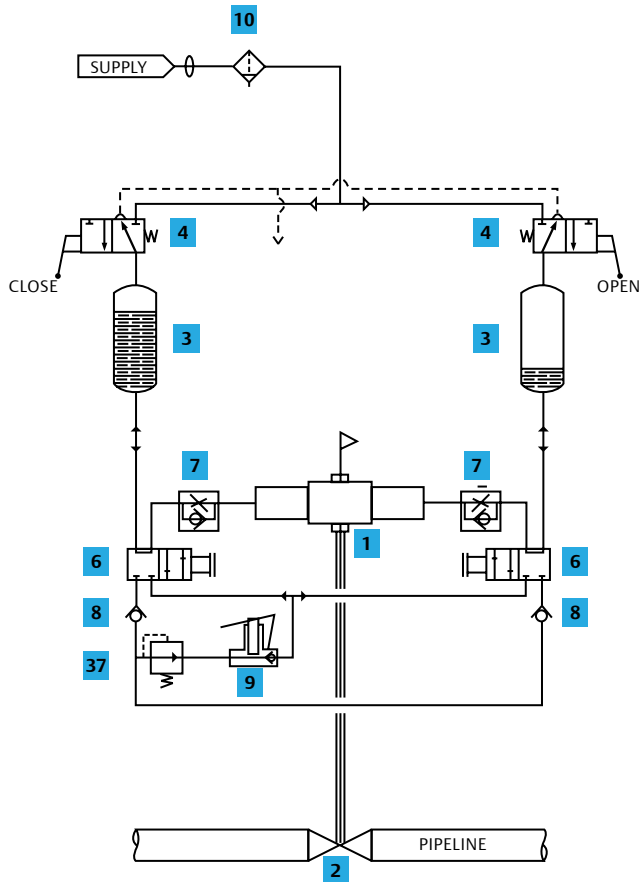
Linear Gate Valve Operators

Hydraulic pressure generating thrust is applied directly to the valve stem through the piston/rod assembly providing full, direct power to the valve stem. These operators provide adjustable shock-free operation.

- Readily adaptable to all rising stem valves.
- Direct connection to the valve stem.
- Materials of construction to suit process or ambient conditions.
- Thrust limiting devices available.
- Special locking valve maintains operator and valve in any desired position and provides thermal relief protection.
- Visual valve position indication
- Readily adaptable for fail safe operation.
- Widely used in pipeline system, critical production and process applications.



Control Schematics (Quarter-turn Operator shown)



Typical Control Schematics for Two-Way Manual Operation

Operations:

- Operate 3-way valve (4) to open or close with power gas
- Operate selector valve (6) to enable respective handpump direction

Other control arrangements are available to suit customer applications. For example:

- Line break detection
- Fail close/open by remote signal
- Energize to open, manual close
- Energize to close, manual reset to open

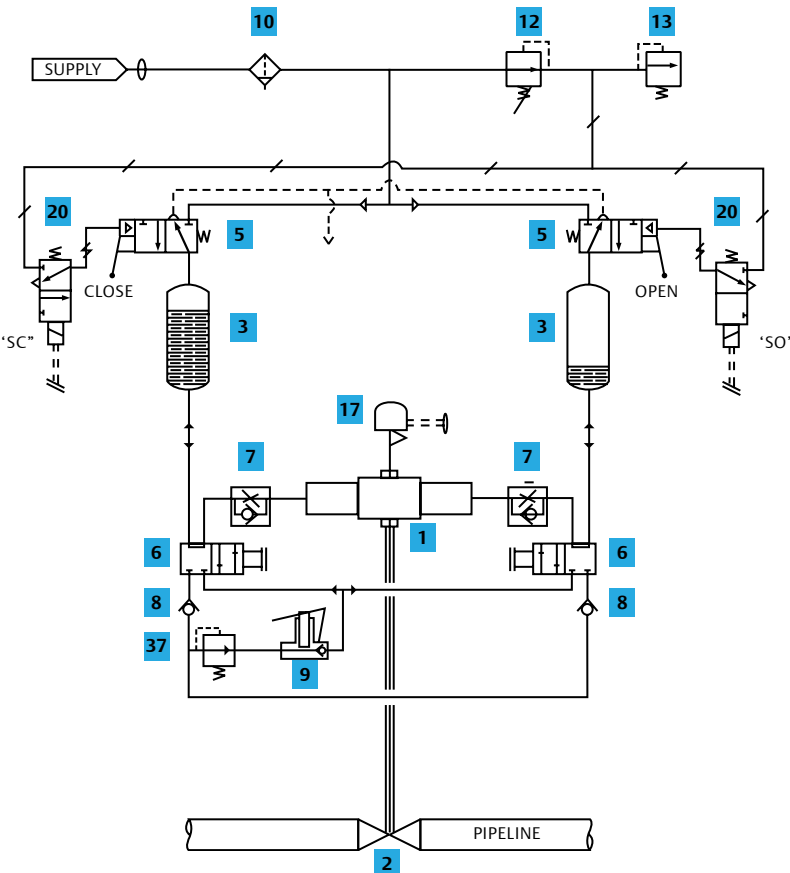
Component List

Manual Operation

- | | |
|------------------------------|---------------------------------|
| 1 Operator | 7 Speed Control Valve |
| 2 Line Valve | 8 Check Valve |
| 3 Gas/Hydraulic Tank | 9 Handpump |
| 4 3-Way Valve, Manual | 10 Filter |
| 6 Selector Valve | 37 Handpump Safety Valve |

Legend

	Power Gas		Return
	Hydraulic		Closed
	Electrical		Instrument
	Field Connection		Vent
	Plugged Port		Open
	Signal		



Typical Control Schematics for Two-Way Electric Operation

Operations:

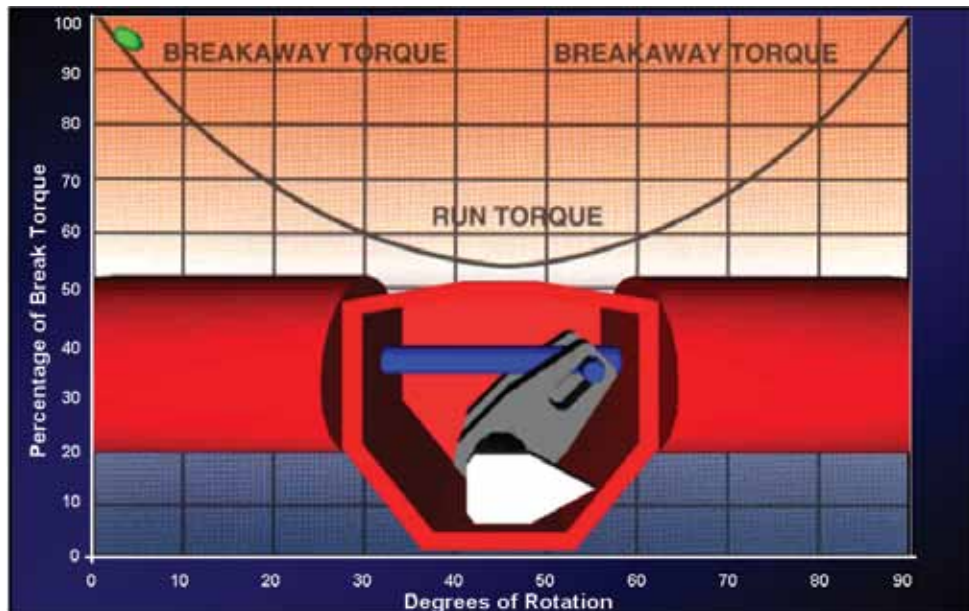
- Energize solenoid 'SC' to close or "SO" to open
- Solenoids must be de-energized at end of stroke

Component List

Electric Operation

- | | |
|------------------------------------|---------------------------------|
| 1 Operator | 9 Handpump |
| 2 Line Valve | 10 Filter |
| 3 Gas/Hydraulic Tank | 12 Regulator |
| 5 3-Way Valve, Manual/Pilot | 13 Relief Valve |
| 6 Selector Valve | 17 Limit Switch |
| 7 Speed Control Valve | 20 Solenoid Valve, N.C. |
| 8 Check Valve | 37 Handpump Safety Valve |

Scotch Yoke Mechanism



The scotch yoke mechanism for Bettis quarter-turn valve operators produces a torque curve that closely matches the valve actuation requirements when converting linear output into rotary motion. The scotch yoke produces greater torque value at the beginning and end of each stroke of the piston, precisely where it is required to operate most types of valves. The torque outputs produced by double-acting actuators are expressed as breakaway and run torque. The breakaway torque is that produced at the beginning and the end of the scotch yoke rotation. The run torque is that produced at the mid-point (45 degrees) of the scotch yoke rotation.



Emerson brands for most common control accessories:

- Digital Valve Controllers:** Fisher®
- Positioners:** Fisher®
- Regulators:** Fisher®
- Switch boxes:** TopWorx
- Wireless position monitor:** TopWorx
- Solenoid valves:** ASCO Numatics™

Contact Us: Emerson Process Management, Valve Automation facilities at your nearest location:

NORTH & SOUTH AMERICA

19200 Northwest Freeway
Houston TX 77065
USA
T +1 281 477 4100
F +1 281 477 2801

2500 Park Avenue West
Mansfield, OH 44906
USA
T +1 419 529 4311
F +1 419 529 3688

13840 Pike Road
Missouri City, Texas 77489
USA
T +1 281 499 1561
F +1 281 499 8445

Av. Hollingsworth,
325, Iporanga Sorocaba,
SP 18087-105
Brazil
T +55 15 3238 3788
F +55 15 3228 3300

MIDDLE EAST & AFRICA

P.O. Box 17033
Dubai
United Arab Emirates
T +971 4 811 8100
F +971 4 886 5465

P.O. Box 105958
Abu Dhabi
United Arab Emirates
T +971 2 697 2000
F +971 2 555 0364

P.O. Box 3911
Al Khobar 31952
Saudi Arabia
T +966 3 814 7560
F +966 3 814 7570

P.O. Box 10305
Jubail 31961
Saudi Arabia
T +966 3 340 8650
F +966 3 340 8790

P.O. Box 32281
Doha
Qatar
T +974 4 576777
F +974 4 315448

24 Angus Crescent
Longmeadow Business Estate East
P.O. Box 6908; Greenstone; 1616
Modderfontein, Extension 5
South Africa
T +27 11 451 3700
F +27 11 451 3800

EUROPE

Asveldweg 11
7556 BR Hengelo (O)
The Netherlands
T +31 74 256 1010
F +31 74 291 0938

Siemensring 112
47877 Willich
Germany
T +49 2154 499 660
F +49 2154 499 6613

25, Rue de Villeneuve
Silic – BP 40434
94583 Rungis
France
T +33 1 49 79 73 00
F +33 1 49 79 73 99

Via Montello 71/73
20038 Seregno (Milan)
Italy
T +39 0362 2285 207
F +39 0362 2436 55

6 Bracken Hill
South West Industrial Estate
Peterlee SR8 2LS
United Kingdom
T +44 191 518 0020
F +44 191 518 0032

2A Szturmowa Str
02-678 Warsaw
Poland
T +48 22 45 89 237
F +48 22 45 89 231

C/ Francisco Gervás, 1
28108 Alcobendas – Madrid
Spain
T +34 0913 586 000
F +34 0913 589 145

Letnikovskaya Str. 10-2
115114 Moscow
Russia and FSU
T +7 495 981 98 11
F +7 495 981 98 10

ASIA PACIFIC

No. 9 Gul Road
#01-02 Singapore 629361
T +65 6501 4600
F +65 6268 0028

9/F Gateway Building
No. 10 Ya Bao Road
Chaoyang District
Beijing 100020
P.R.China
T +86 10 8572 6666
F +86 10 8572 6888

No.1 Lai Yuan Road
Wuqing Development Area
Tianjin 301700
P.R. China
T +86 22 8212 3300
F +86 22 8212 3308

Lot 13112, Mukim Labu
Kawasan Perindustrian Nilai
71807 Nilai, Negeri Sembilan
Malaysia
T +60 6 799 2323
F +60 6 799 9942

471 Mountain Highway
Bayswater, Victoria 3153
Australia
T +61 3 9721 0200
F +61 3 9720 0588

Delphi B Wing, 601 & 602
6th Floor, Central Avenue
Powai, Mumbai – 400 076
India
T +91 22 6662 0566
F +91 22 6662 0500

© 2013 Emerson Process Management. All rights reserved.

The Emerson logo is a trademark and service mark of Emerson Electric Co. "Brand mark listing" are marks of one of the Emerson Process Management family of companies. All other marks are property of their respective owners.

The contents of this publication are presented for information purposes only, and while every effort has been made to ensure their accuracy, they are not to be construed as warranties or guarantees, express or implied, regarding the products or services described herein or their use or applicability. All sales are governed by our terms and conditions, which are available on request. We reserve the right to modify or improve the designs or specifications of our products at any time without notice.

The color orange, U.S. Reg. No. 2,739,393, is a registered trademark of the Bettis Corporation.

BETTIS™

DOC.6P.GH.US Rev D 06-13

www.emersonprocess.com/bettis


EMERSON
Process Management